



PORTABLE, POWERFUL



DURABLE, PRECISE

**PORTABLE
LINE BORING
MACHINES
& MORE**



PORTABLE, POWERFUL



DURABLE, PRECISE

**PORTABLE
LINE BORING
MACHINES
& MORE**



ABOUT HKMGRUP

HKMGRUP has started its operations in 2009 for production of different machinery and tools. Located in Istanbul Dudullu Industrial Zone with its different facilities for designing, machining, assembling and warehousing with in a total 1.500sqm closed area. A well trained team of total 25 people have great effort to bring out one of most powerful and durable portable line boring machines and more.

BURAYA FİRMA İLE İLGİLİ OLABİLECEK BİR RESİM. FUAR RESMİ DE OLABİLİR.



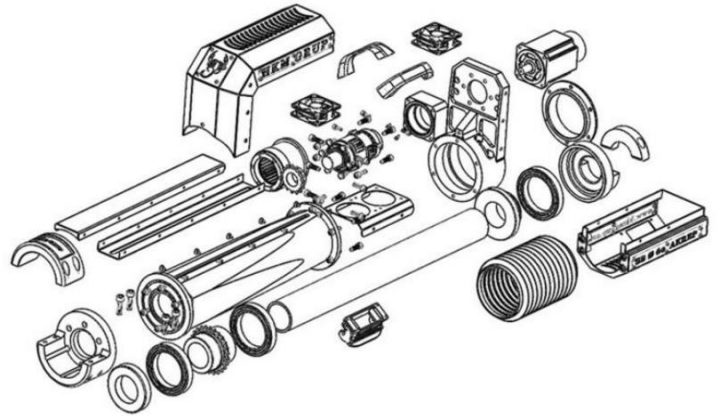
We are specialized on producing portable line boring machines and known as the best in Turkey. Which will be very well-known shortly also overseas. The unique design, durability in long time machining, best possible material and precise results on target are our main strength.

Our models are capable to re-bore all kind of deformed holes, bearings, sleeves, roller bearings, construction machinery shaft bearings, boom bearings, crane shaft bearings, aluminum injection molded bushing bearings and many other not count. We are flexible for customer demands to customize our machines to fit 100% for their requirements.

All our models are also optionally can be equipped with our ready sets for bore-face machining, on purpose out-bore machining, rotary in-bore or out-bore welding (MIG).

Besides portable line boring machines **HKMGrup** also specialized in portable vertical CNC lathe which can be customized on target dimensions and specifications.

We answer the needs of different fields such; mining industry, shipyards, marines, refining sites, chemical/petrochemical sites, power generation, construction fields and many others where a re-boring, maintaining and repair needed on site without a long term shutdown.



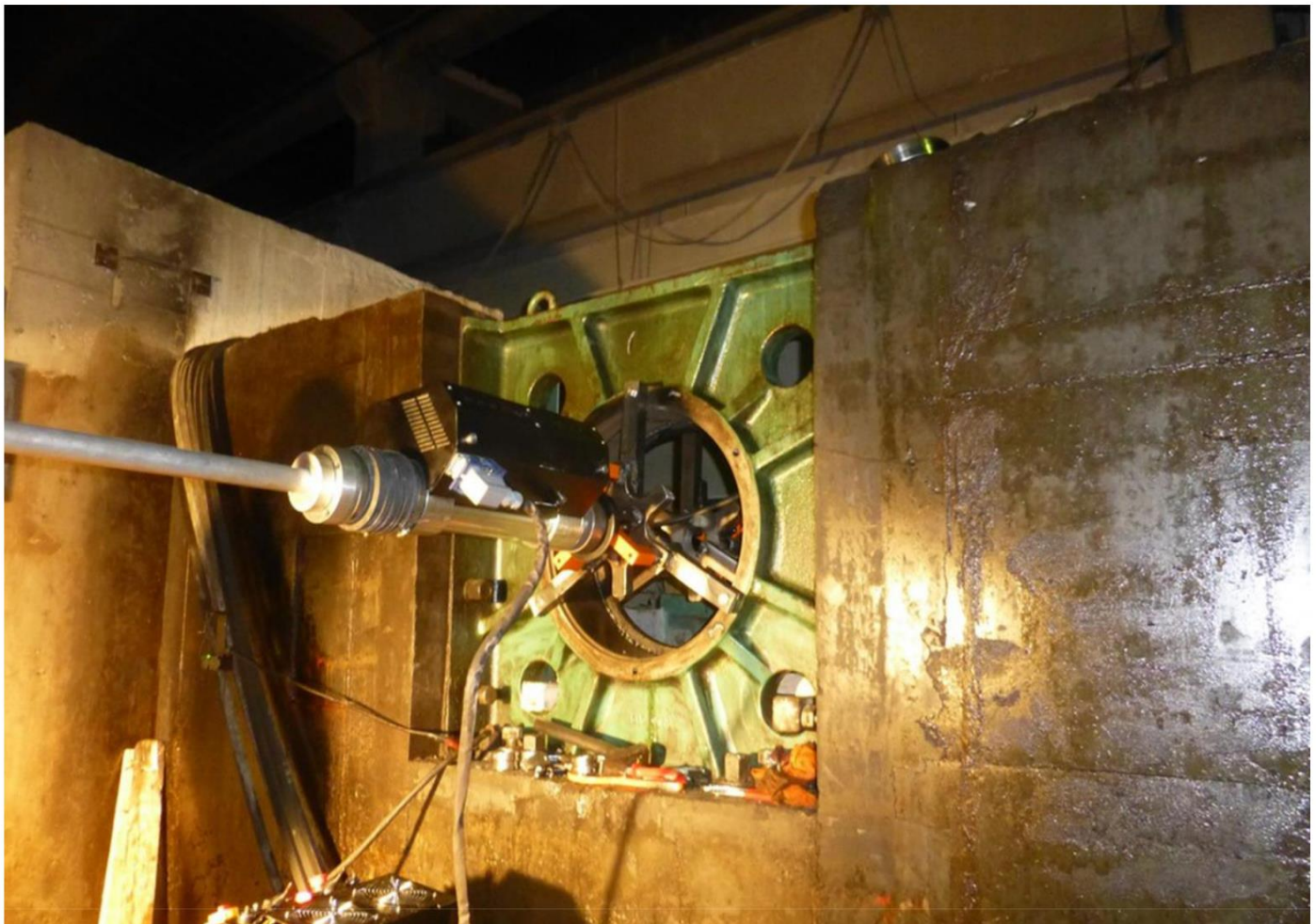
Our machines are appreciation guaranteed!!!

RENTAL & ON SITE SERVICE

We know the worth of know-how and in many cases equipment is not important against the “job done”. In many industrial sites a shutdown of a part/section is a nightmare and the loss is worthless. We are ready to come and help you for your repair and maintenance.

With our experienced team and mentally fast reflection we can create on target customized machine sets with a case study and give you on site solution in shortest possible time. This is most of the time more confident and faster for solution.

Problem solved!



FIELD OF USAGE

Portable machines are useful for practical, time and cost saving purpose in many fields and industries such as;

- ▶ CONSTRUCTION MACHINERY
- ▶ MINING INDUSTRY&PLANTS
- ▶ RECYCLING PLANTS
- ▶ QUARRY PLANT&MACHINERY
- ▶ OIL REFINING INDUSTRY PLANTS
- ▶ PETROCHEMICAL PLANTS
- ▶ POWER GENERATION PLANTS
- ▶ SHIPYARDS & MARINES
- ▶ CEMENT PLANTS
- ▶ METAL ROLLING PLANTS
- ▶ FOOD INDUSTRY PLANTS
- ▶ RAILWAY INDUSTRY
- ▶ DEFENCE INDUSTRY
- ▶ OILFIELDS
- ▶ STEEL CONSTRUCTION SITES & MANY OTHER FIELDS



CLICK ON THE MODEL NAME TO GO DIRECT OR SCROLL DOWN FOR NEXT PAGE

▶ MODEL SB61 Ø40



▶ MODEL SB60 Ø60



▶ MODEL SB60 MEGA Ø60



▶ MODEL KASOF 4025 Ø40



▶ BAR Ø REDUCER KITS



▶ FACE MACHINING KITS



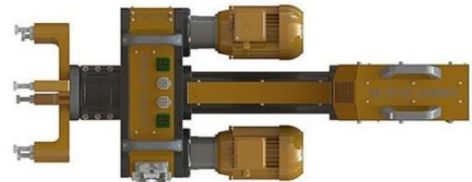
▶ MODEL SB61,5 Ø40



▶ MODEL SB60 AKREP Ø60



▶ MODEL SB60 JUMBO Ø60



▶ MODEL KASOF 6025 Ø60



▶ BORE WELDING KITS



▶ SPARE PARTS



MODEL SB61 Ø40



MAIN FEATURES

BORING BAR DIAMETER	Ø40 mm
BORING DIAMETER STD. (MIN-MAX) *OPTIONAL (MIN.-MAX.)	Ø41 mm - Ø300 mm Ø27 mm* - Ø600 mm* Optional
BORING BAR LENGTH (STD-OPT*.)	2.000 mm Std. Max. 6.000 mm*
BORING LENGTH/STROKE (* OPTIONAL)	280 mm
LENGTH OF MOVEMENT (*OPTIONAL)	6.000 mm*
MIN.-MAX. CUTTING DEPTH	0,01-10,00mm
FEED RATE	min. 0,01mm per revolution
CUTTING TOOL HOLDER	120° Ø16 mm
CUTTING TOOL UNTI-BREAKAGE	Available
MACHINNING SENSITIVITY	H7
SURFACE ROUGHNESS *based on cutter/working	Minimum ra&rz 3
WORKING POSITIONS	All positions/directions
MAXIMUM WORKING TIME	Unlimited
WEIGHT	50 Kg.

MODEL SB61 Ø40

STANDARD PACKAGE CONTENT

- ▶ 1X MAIN BODY (CHASSIS)



- ▶ 1X CONTROL UNIT



- ▶ 1X BORING BAR Ø40 2.000 MM



- ▶ 2X ALLIGNMENT MOUNT KIT



- ▶ 2X NECK FLANGE MOUNT FIXTURE



- ▶ 2X STRAIGHT MOUNT FIXTURE



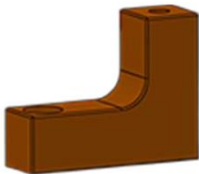
- ▶ 1X POWER CORD



- ▶ 1X CONNECTION CORD



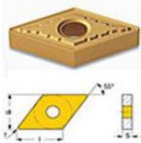
- ▶ 12X L FIXTURE LEGS



- ▶ 1X TOOL HOLDER Ø16MM



- ▶ 10X CUTTER/CUTTING TOOL



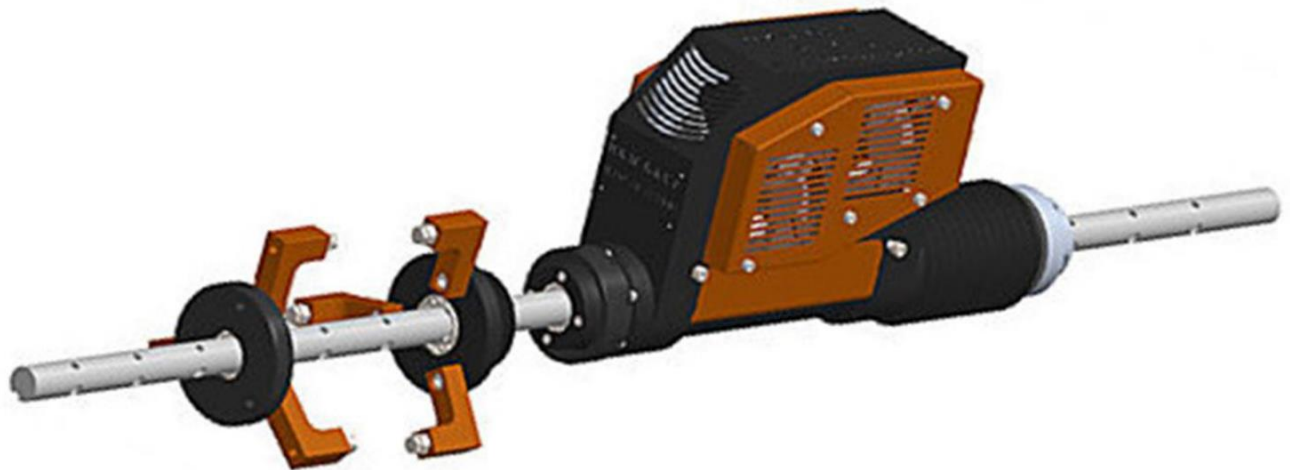


MODEL SB61 Ø40

DETAILED FEATURES

ROTATION (DIRECTION) MOTOR	AC Motor
FEEDING MOTOR	AC Motor
POWER NEEDED *110 V arrangement available	220 Volt 50hz/60hz
CURRENT PROTECTION	Available
RPM *OPTIONALLY CAN BE INCREASED	220
TORQUE	3600 n/m
TORQUE CONTROL	Optional
BAR DRIVE	Single Line Chain
ROTATION GEARBOX	HKM Group Planet Gearbox 14:1
FEEDING GEARBOX	HKM Group Planet Gearbox 56:1
CONTROL SYSTEM	Manuel or Digital>(*Optional)
TOUCH SCREEN	Optional
EMERGENCY STOP	Available
SPARE CONTROL UNIT	Available
ROTATION LIMIT SYSTEM	Limit Switch
ROTATION(DIRECTION) SPEED ADJUSTMENT	Available
FEEDING SPEED ADJUSTMENT	Available (min. 0,01mm per revolution)
FEEDING DIRECTION	Forward & Backward /Reversible
ROTATION DIRECTION	Right & Left /Traverse
WORKING TEMPARATURES	Min. -30°C Max. +50°C
COOLING SYSTEM	Cooling Fan Engaged to Motor Shaft
LUBRICATION	Heat Proof Rubbered Grease
BODY MATERIAL	Steel
GEARBOX MATERIAL	Carburized Steel
FIXTURE (ALIGNMENT) MATERIAL	4140 Treated Steel
WORKABILITY WITH PORTABLE POWER UNITS	Available
BORE WELDING * Optional Kit	MIG-Metal Gas Arc Welding (MGAW)
RAMP ON	Available
FACE MACHINNING	Optional
OUTBORE MACHINNING	Optional
DRILLING	Optional
GROOVING *With Optional Boring Bar	Up to M32 Optional
BLIND HOLE BORING	Available
CONIC BORING	Optional
LANGUAGE SELECTION	Optional
COLOR SELECTION	Optional
WARRANTY	Mechanical & Electrical 2 Years

MODEL SB61,5 Ø40



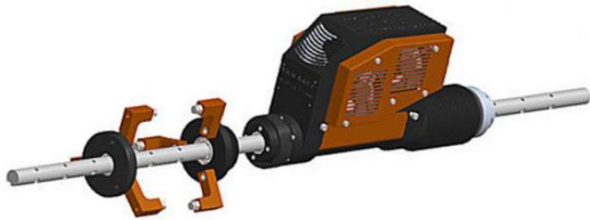
MAIN FEATURES

BORING BAR DIAMETER	Ø40 mm
BORING DIAMETER STD. (MIN-MAX) *OPTIONAL (MIN.-MAX.)	Ø41 mm - Ø300 mm Ø27 mm* - Ø600 mm* Optional
BORING BAR LENGTH (STD-OPT*.)	2.000 mm Std. Max. 6.000 mm*
BORING LENGTH/STROKE (* OPTIONAL)	280 mm
LENGTH OF MOVEMENT (*OPTIONAL)	6.000 mm*
MIN.-MAX. CUTTING DEPTH	0,01-10,00mm
FEED RATE	min. 0,01mm per revolution
CUTTING TOOL HOLDER	120° Ø16 mm
CUTTING TOOL UNTI-BREAKAGE	Available
MACHINNING SENSITIVITY	H7
SURFACE ROUGHNESS *based on cutter/working	Minimum ra&rz 3
WORKING POSITIONS	All positions/directions
MAXIMUM WORKING TIME	Unlimited
WEIGHT	45 Kg.

MODEL SB61,5 Ø40

STANDARD PACKAGE CONTENT

- ▶ 1X MAIN BODY (CHASSIS)



- ▶ 1X CONTROL UNIT



- ▶ 1X BORING BAR Ø40 2.000 MM



- ▶ 2X ALIGNMENT MOUNT KIT



- ▶ 2X NECK FLANGE MOUNT FIXTURE



- ▶ 2X STRAIGHT MOUNT FIXTURE



- ▶ 1X POWER CORD



- ▶ 1X CONNECTION CORD



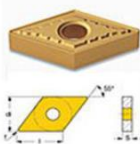
- ▶ 12X L FIXTURE LEGS



- ▶ 1X TOOL HOLDER Ø16MM



- ▶ 10X CUTTER/CUTTING TOOL





MODEL SB61,5 Ø40

DETAILED FEATURES

ROTATION (DIRECTION) MOTOR	Servo
FEEDING MOTOR	Servo
POWER NEEDED *110 V arrangement available	220 Volt 50hz/60hz
CURRENT PROTECTION	Available
RPM *OPTIONALLY CAN BE INCREASED	240
TORQUE	3600 n/m
TORQUE CONTROL	Available
BAR DRIVE	Single Line Chain
ROTATION GEARBOX	HKM Group Planet Gearbox 14:1
FEEDING GEARBOX	HKM Group Planet Gearbox 14:1
CONTROL SYSTEM	Manuel or Digital>(*Optional)
TOUCH SCREEN	Optional
EMERGENCY STOP	Available
SPARE CONTROL UNIT	Available
ROTATION LIMIT SYSTEM	Limit Switch
ROTATION(DIRECTION) SPEED ADJUSTMENT	Available
FEEDING SPEED ADJUSTMENT	Available (min. 0,01mm per revolution)
FEEDING DIRECTION	Forward & Backward /Reversible
ROTATION DIRECTION	Right & Left /Traverse
WORKING TEMPARATURES	Min. -30°C Max. +50°C
COOLING SYSTEM	Cooling Fan Engaged to Motor Shaft
LUBRICATION	Heat Proof Rubbered Grease
BODY MATERIAL	7075 Aluminum Alloy
GEARBOX MATERIAL	Carburized Steel
FIXTURE (ALIGNMENT) MATERIAL	4140 Treated Steel
WORKABILITY WITH PORTABLE POWER UNITS	Available
BORE WELDING * Optional Kit	MIG-Metal Gas Arc Welding (MGAW)
RAMP ON	Available
FACE MACHINNING	Optional
OUTBORE MACHINNING	Optional
DRILLING	Optional
GROOVING *With Optional Boring Bar	Up to M32 Optional
BLIND HOLE BORING	Available
CONIC BORING	Optional
LANGUAGE SELECTION	Optional
COLOR SELECTION	Optional
WARRANTY	Mechanical & Electrical 2 Years

MODEL SB60 Ø60



MAIN FEATURES

BORING BAR DIAMETER	Ø60 mm
BORING DIAMETER STD. (MIN-MAX) *OPTIONAL (MIN.-MAX.)	Ø61 mm - Ø350 mm Ø27 mm* - Ø600 mm* Optional
BORING BAR LENGTH (STD-OPT*.)	2.000 mm Std. Max. 6.000 mm*
BORING LENGTH/STROKE (* OPTIONAL)	280 mm
LENGTH OF MOVEMENT (*OPTIONAL)	6.000 mm*
MIN.-MAX. CUTTING DEPTH	0,01-10,00mm
FEED RATE	min. 0,01mm per revolution
CUTTING TOOL HOLDER	120° Ø20 mm
CUTTING TOOL UNTI-BREAKAGE	Available
MACHINNING SENSITIVITY	H7
SURFACE ROUGHNESS *based on cutter/working	Minimum ra&rz 3
WORKING POSITIONS	All positions/directions
MAXIMUM WORKING TIME	Unlimited
WEIGHT	75 Kg.

MODEL SB60 Ø60

STANDARD PACKAGE CONTENT

- ▶ 1X MAIN BODY (CHASSIS)



- ▶ 1X CONTROL UNIT



- ▶ 1X BORING BAR Ø60 2.000 MM



- ▶ 2X ALIGNMENT MOUNT KIT



- ▶ 2X NECK FLANGE MOUNT FIXTURE



- ▶ 2X STRAIGHT MOUNT FIXTURE



- ▶ 1X POWER CORD



- ▶ 1X CONNECTION CORD



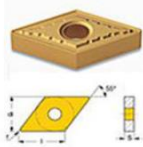
- ▶ 12X L FIXTURE LEGS



- ▶ 1X TOOL HOLDER Ø20MM



- ▶ 10X CUTTER/CUTTING TOOL



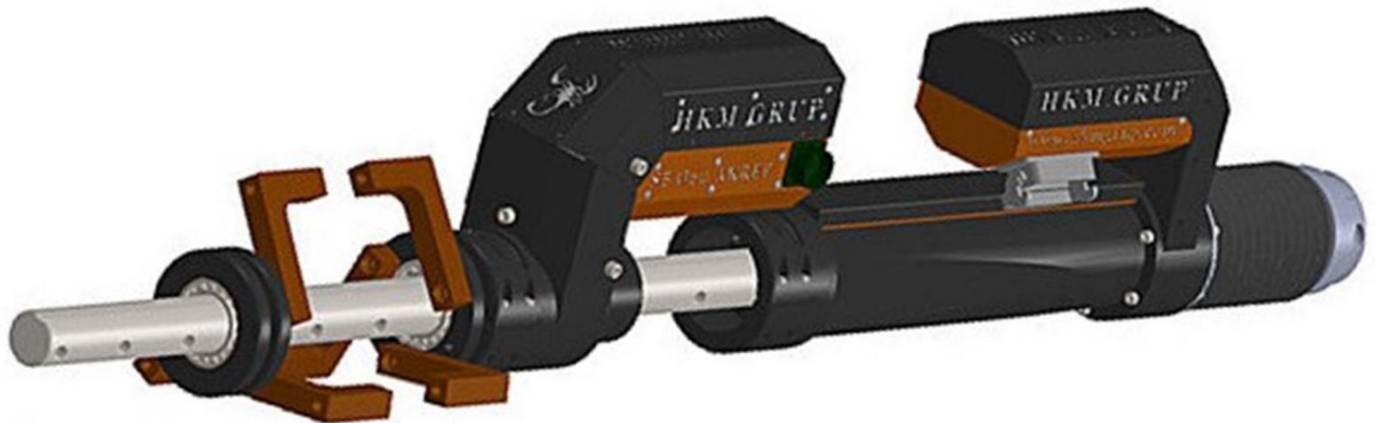


MODEL SB60 Ø60

DETAILED FEATURES

ROTATION (DIRECTION) MOTOR	AC Motor
FEEDING MOTOR	AC Motor
POWER NEEDED *110 V arrangement available	220 Volt 50hz/60hz
CURRENT PROTECTION	Available
RPM *OPTIONALLY CAN BE INCREASED	160
TORQUE	3600 n/m
TORQUE CONTROL	Optional
BAR DRIVE	Double Line Chain
ROTATION GEARBOX	HKM Group Planet Gearbox 14:1
FEEDING GEARBOX	HKM Group Planet Gearbox 56:1
CONTROL SYSTEM	Manuel or Digital*(*Optional)
TOUCH SCREEN	Optional
EMERGENCY STOP	Available
SPARE CONTROL UNIT	Available
ROTATION LIMIT SYSTEM	Limit Switch
ROTATION(DIRECTION) SPEED ADJUSTMENT	Available
FEEDING SPEED ADJUSTMENT	Available (min. 0,01mm per revolution)
FEEDING DIRECTION	Forward & Backward /Reversible
ROTATION DIRECTION	Right & Left /Traverse
WORKING TEMPARATURES	Min. -30°C Max. +50°C
COOLING SYSTEM	Cooling Fan Engaged to Motor Shaft
LUBRICATION	Heat Proof Rubbered Grease
BODY MATERIAL	Steel
GEARBOX MATERIAL	Carburized Steel
FIXTURE (ALIGNMENT) MATERIAL	4140 Treated Steel
WORKABILITY WITH PORTABLE POWER UNITS	Available
BORE WELDING * Optional Kit	MIG-Metal Gas Arc Welding (MGAW)
RAMP ON	Available
FACE MACHINNING	Optional
OUTBORE MACHINNING	Optional
DRILLING	Optional
GROOVING *With Optional Boring Bar	Up to M32 Optional
BLIND HOLE BORING	Available
CONIC BORING	Optional
LANGUAGE SELECTION	Optional
COLOR SELECTION	Optional
WARRANTY	Mechanical & Electrical 2 Years

MODEL SB60 AKREP Ø60



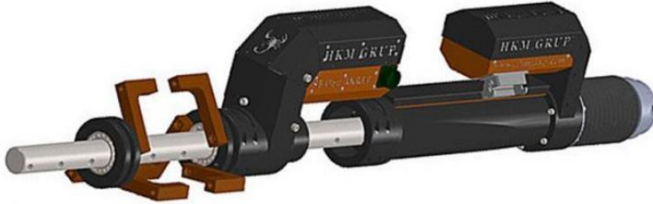
MAIN FEATURES

BORING BAR DIAMETER	Ø60 mm
BORING DIAMETER STD. (MIN-MAX) *OPTIONAL (MIN.-MAX.)	Ø61 mm - Ø350 mm Ø27 mm* - Ø800 mm* Optional
BORING BAR LENGTH (STD-OPT*.)	2.000 mm Std. Max. 6.000 mm*
BORING LENGTH/STROKE (* OPTIONAL)	500 mm
LENGTH OF MOVEMENT (*OPTIONAL)	6.000 mm*
MIN.-MAX. CUTTING DEPTH	0,01-10,00mm
FEED RATE	min. 0,01mm per revolution
CUTTING TOOL HOLDER	120° Ø20 mm
CUTTING TOOL UNTI-BREAKAGE	Available
MACHINNING SENSITIVITY	H7
SURFACE ROUGHNESS *based on cutter/working	Minimum ra&rz 3
WORKING POSITIONS	All positions/directions
MAXIMUM WORKING TIME	Unlimited
WEIGHT	69 Kg.

MODEL SB60 AKREP Ø60

STANDARD PACKAGE CONTENT

- ▶ 1X MAIN BODY (CHASSIS)



- ▶ 1X CONTROL UNIT



- ▶ 1X BORING BAR Ø60 2.000 MM



- ▶ 2X ALIGNMENT MOUNT KIT



- ▶ 2X NECK FLANGE MOUNT FIXTURE



- ▶ 2X STRAIGHT MOUNT FIXTURE



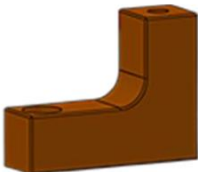
- ▶ 1X POWER CORD



- ▶ 1X CONNECTION CORD



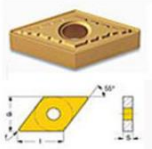
- ▶ 12X L FIXTURE LEGS



- ▶ 1X TOOL HOLDER Ø20MM



- ▶ 10X CUTTER/CUTTING TOOL





MODEL SB60 AKREP Ø60

DETAILED FEATURES

ROTATION (DIRECTION) MOTOR	Servo
FEEDING MOTOR	Servo
POWER NEEDED *110 V arrangement available	220 Volt 50hz/60hz
CURRENT PROTECTION	Available
RPM *OPTIONALLY CAN BE INCREASED	220
TORQUE	3800 n/m
TORQUE CONTROL	Available
BAR DRIVE	Double Line Chain
ROTATION GEARBOX	HKM Group Planet Gearbox 14:1
FEEDING GEARBOX	HKM Group Planet Gearbox 14:1
CONTROL SYSTEM	Manuel or Digital>(*Optional)
TOUCH SCREEN	Optional
EMERGENCY STOP	Available
SPARE CONTROL UNIT	Available
ROTATION LIMIT SYSTEM	Limit Switch
ROTATION(DIRECTION) SPEED ADJUSTMENT	Available
FEEDING SPEED ADJUSTMENT	Available (min. 0,01mm per revolution)
FEEDING DIRECTION	Forward & Backward /Reversible
ROTATION DIRECTION	Right & Left /Traverse
WORKING TEMPARATURES	Min. -30°C Max. +50°C
COOLING SYSTEM	Cooling Fan Engaged to Motor Shaft
LUBRICATION	Heat Proof Rubbered Grease
BODY MATERIAL	7075 Aluminum Alloy
GEARBOX MATERIAL	Carburized Steel
FIXTURE (ALIGNMENT) MATERIAL	4140 Treated Steel
WORKABILITY WITH PORTABLE POWER UNITS	Available
BORE WELDING * Optional Kit	MIG-Metal Gas Arc Welding (MGAW)
RAMP ON	Available
FACE MACHINNING	Optional
OUTBORE MACHINNING	Optional
DRILLING	Optional
GROOVING *With Optional Boring Bar	Up to M32 Optional
BLIND HOLE BORING	Available
CONIC BORING	Optional
LANGUAGE SELECTION	Optional
COLOR SELECTION	Optional
WARRANTY	Mechanical & Electrical 2 Years

MODEL SB60 MEGA Ø60



MAIN FEATURES

BORING BAR DIAMETER	Ø60 mm
BORING DIAMETER STD. (MIN-MAX) *OPTIONAL (MIN.-MAX.)	Ø61 mm - Ø350 mm Ø27 mm* - Ø1.000 mm* Optional
BORING BAR LENGTH (STD-OPT*.)	2.000 mm Std. Max. 6.000 mm*
BORING LENGTH/STROKE (* OPTIONAL)	280 mm
LENGTH OF MOVEMENT (*OPTIONAL)	6.000 mm*
MIN.-MAX. CUTTING DEPTH	0,01-10,00mm
FEED RATE	min. 0,01mm per revolution
CUTTING TOOL HOLDER	120° Ø20 mm
CUTTING TOOL UNTI-BREAKAGE	Available
MACHINING SENSITIVITY	H7
SURFACE ROUGHNESS *based on cutter/working	Minimum ra&rz 3
WORKING POSITIONS	All positions/directions
MAXIMUM WORKING TIME	Unlimited
WEIGHT	60 Kg.

MODEL SB60 MEGA Ø60

STANDARD PACKAGE CONTENT

- ▶ 1X MAIN BODY (CHASSIS)



- ▶ 1X CONTROL UNIT



- ▶ 1X BORING BAR Ø60 2.000 MM



- ▶ 2X ALLIGNMENT MOUNT KIT



- ▶ 2X NECK FLANGE MOUNT FIXTURE



- ▶ 2X STRAIGHT MOUNT FIXTURE



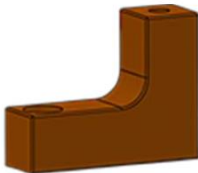
- ▶ 1X POWER CORD



- ▶ 1X CONNECTION CORD



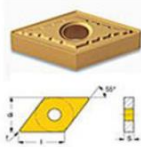
- ▶ 12X L FIXTURE LEGS



- ▶ 1X TOOL HOLDER Ø20MM



- ▶ 10X CUTTER/CUTTING TOOL



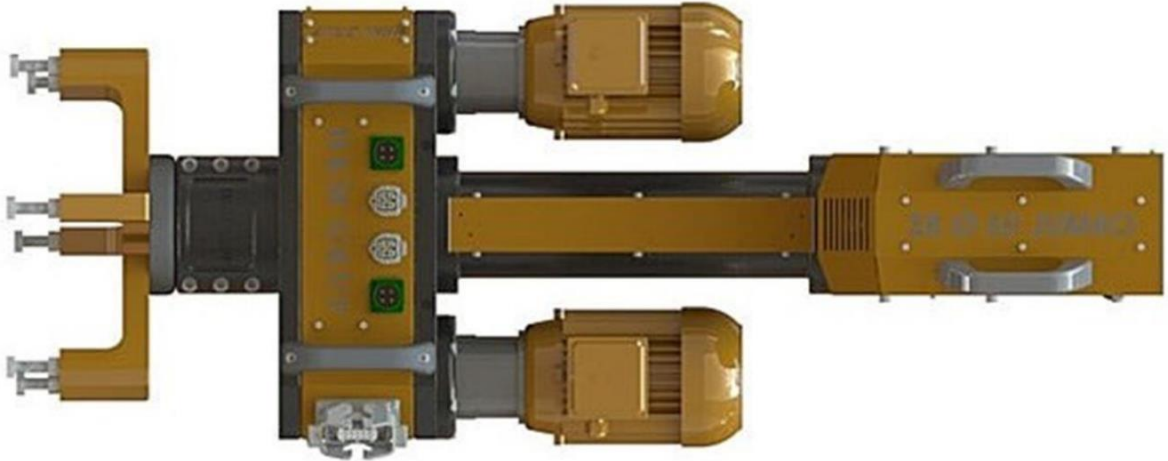


MODEL SB60 MEGA Ø60

DETAILED FEATURES

ROTATION (DIRECTION) MOTOR	Servo
FEEDING MOTOR	Servo
POWER NEEDED *110 V arrangement available	220 Volt 50hz/60hz
CURRENT PROTECTION	Available
RPM *OPTIONALLY CAN BE INCREASED	200
TORQUE	3800 n/m
TORQUE CONTROL	Available
BAR DRIVE	Double Line Chain
ROTATION GEARBOX	HKM Group Planet Gearbox 14:1
FEEDING GEARBOX	HKM Group Planet Gearbox 14:1
CONTROL SYSTEM	Manuel or Digital>(*Optional)
TOUCH SCREEN	Optional
EMERGENCY STOP	Available
SPARE CONTROL UNIT	Available
ROTATION LIMIT SYSTEM	Limit Switch
ROTATION(DIRECTION) SPEED ADJUSTMENT	Available
FEEDING SPEED ADJUSTMENT	Available (min. 0,01mm per revolution)
FEEDING DIRECTION	Forward & Backward /Reversible
ROTATION DIRECTION	Right & Left /Traverse
WORKING TEMPARATURES	Min. -30°C Max. +50°C
COOLING SYSTEM	Cooling Fan Engaged to Motor Shaft
LUBRICATION	Heat Proof Rubbered Grease
BODY MATERIAL	7075 Aluminum Alloy
GEARBOX MATERIAL	Carburized Steel
FIXTURE (ALIGNMENT) MATERIAL	4140 Treated Steel
WORKABILITY WITH PORTABLE POWER UNITS	Available
BORE WELDING * Optional Kit	MIG-Metal Gas Arc Welding (MGAW)
RAMP ON	Available
FACE MACHINNING	Optional
OUTBORE MACHINNING	Optional
DRILLING	Optional
GROOVING *With Optional Boring Bar	Up to M32 Optional
BLIND HOLE BORING	Available
CONIC BORING	Optional
LANGUAGE SELECTION	Optional
COLOR SELECTION	Optional
WARRANTY	Mechanical & Electrical 2 Years

MODEL SB60 JUMBO Ø60



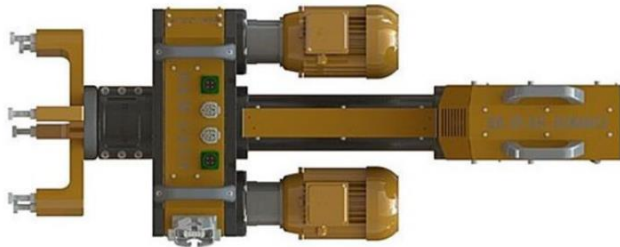
MAIN FEATURES

BORING BAR DIAMETER	Ø60 mm
BORING DIAMETER STD. (MIN-MAX) *OPTIONAL (MIN.-MAX.)	Ø61 mm - Ø350 mm Ø27 mm* - Ø1.200 mm* Optional
BORING BAR LENGTH (STD-OPT*.)	2.000 mm Std. Max. 6.000 mm*
BORING LENGTH/STROKE (* OPTIONAL)	300 mm
LENGTH OF MOVEMENT (*OPTIONAL)	12.000 mm*
MIN.-MAX. CUTTING DEPTH	0,01-10,00mm
FEED RATE	min. 0,01mm per revolution
CUTTING TOOL HOLDER	120° Ø20 mm
CUTTING TOOL UNTI-BREAKAGE	Available
MACHINNING SENSITIVITY	H7
SURFACE ROUGHNESS *based on cutter/working	Minimum ra&rz 3
WORKING POSITIONS	All positions/directions
MAXIMUM WORKING TIME	Unlimited
WEIGHT	75 Kg.

MODEL SB60 JUMBO Ø60

STANDARD PACKAGE CONTENT

- ▶ 1X MAIN BODY (CHASSIS)



- ▶ 1X CONTROL UNIT



- ▶ 1X BORING BAR Ø60 2.000 MM



- ▶ 2X ALLIGNMENT MOUNT KIT



- ▶ 2X NECK FLANGE MOUNT FIXTURE



- ▶ 2X STRAIGHT MOUNT FIXTURE



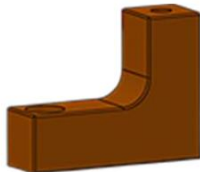
- ▶ 1X POWER CORD



- ▶ 1X CONNECTION CORD



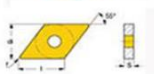
- ▶ 12X L FIXTURE LEGS



- ▶ 1X TOOL HOLDER Ø20MM



- ▶ 10X CUTTER/CUTTING TOOL



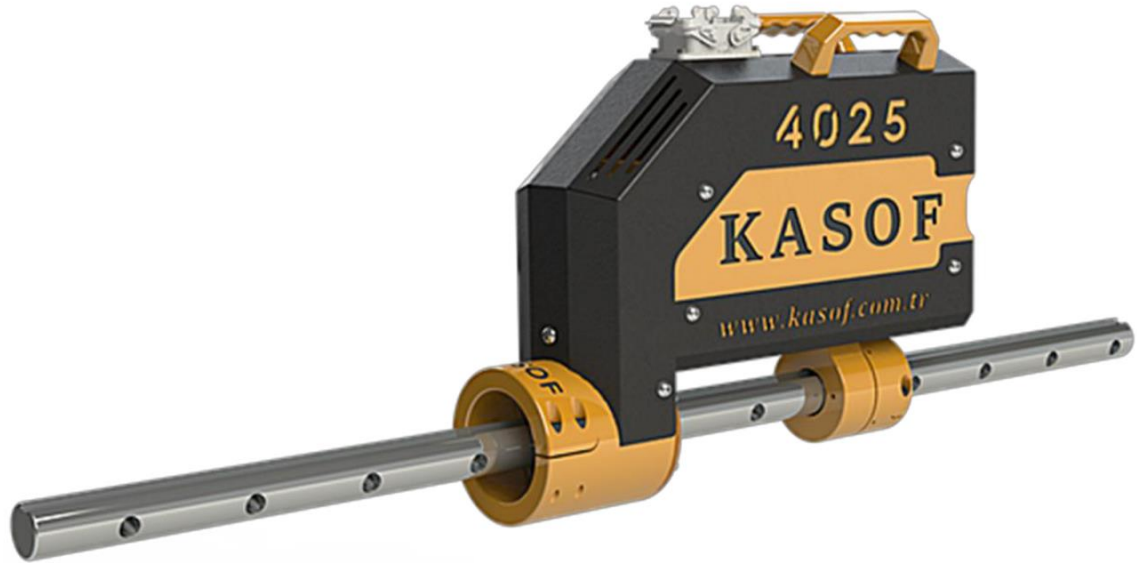


MODEL SB60 JUMBO Ø60

DETAILED FEATURES

ROTATION (DIRECTION) MOTOR	AC Motor
FEEDING MOTOR	AC Motor
POWER NEEDED *110 V arrangement available	220 Volt 50hz/60hz
CURRENT PROTECTION	Available
RPM *OPTIONALLY CAN BE INCREASED	200
TORQUE	7600 n/m
TORQUE CONTROL	Optional
BAR DRIVE	Double Line Chain
ROTATION GEARBOX	HKM Group Planet Gearbox 14:1
FEEDING GEARBOX	HKM Group Planet Gearbox 56:1
CONTROL SYSTEM	Manuel or Digital>(*Optional)
TOUCH SCREEN	Optional
EMERGENCY STOP	Available
SPARE CONTROL UNIT	Available
ROTATION LIMIT SYSTEM	Limit Switch
ROTATION(DIRECTION) SPEED ADJUSTMENT	Available
FEEDING SPEED ADJUSTMENT	Available (min. 0,01mm per revolution)
FEEDING DIRECTION	Forward & Backward /Reversible
ROTATION DIRECTION	Right & Left /Traverse
WORKING TEMPARATURES	Min. -30°C Max. +50°C
COOLING SYSTEM	Cooling Fan Engaged to Motor Shaft
LUBRICATION	Heat Proof Rubbered Grease
BODY MATERIAL	7075 Aluminum Alloy
GEARBOX MATERIAL	Carburized Steel
FIXTURE (ALIGNMENT) MATERIAL	4140 Treated Steel
WORKABILITY WITH PORTABLE POWER UNITS	Available
BORE WELDING * Optional Kit	MIG-Metal Gas Arc Welding (MGAW)
RAMP ON	Available
FACE MACHINNING	Optional
OUTBORE MACHINNING	Optional
DRILLING	Optional
GROOVING *With Optional Boring Bar	Up to M32 Optional
BLIND HOLE BORING	Available
CONIC BORING	Optional
LANGUAGE SELECTION	Optional
COLOR SELECTION	Optional
WARRANTY	Mechanical & Electrical 2 Years

MODEL KASOF 4025 Ø40



MAIN FEATURES

BORING BAR DIAMETER	Ø40 mm
BORING DIAMETER STD. (MIN-MAX) *OPTIONAL (MIN.-MAX.)	Ø41 mm - Ø300 mm Ø27 mm* - Ø600 mm* Optional
BORING BAR LENGTH (STD-OPT*.)	2.000 mm Std. Max. 6.000 mm*
BORING LENGTH/STROKE (* OPTIONAL)	250 mm
LENGTH OF MOVEMENT (*OPTIONAL)	6.000 mm*
MIN.-MAX. CUTTING DEPTH	0,01-10,00mm
FEED RATE	min. 0,01mm per revolution
CUTTING TOOL HOLDER	120° Ø16 mm
CUTTING TOOL UNTI-BREAKAGE	Available
MACHINNING SENSITIVITY	H7
SURFACE ROUGHNESS *based on cutter/working	Minimum ra&rz 3
WORKING POSITIONS	All positions/directions
MAXIMUM WORKING TIME	Unlimited
WEIGHT	25 Kg.

MODEL KASOF 4025 Ø40

STANDARD PACKAGE CONTENT

- ▶ 1X MAIN BODY (CHASSIS)



- ▶ 1X CONTROL UNIT



- ▶ 1X BORING BAR Ø40 2.000 MM



- ▶ 2X ALLIGNMENT MOUNT KIT



- ▶ 2X NECK FLANGE MOUNT FIXTURE



- ▶ 2X STRAIGHT MOUNT FIXTURE



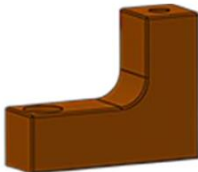
- ▶ 1X POWER CORD



- ▶ 1X CONNECTION CORD



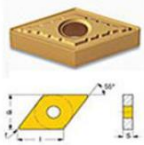
- ▶ 12X L FIXTURE LEGS



- ▶ 1X TOOL HOLDER Ø16MM



- ▶ 10X CUTTER/CUTTING TOOL





MODEL KASOF 4025 Ø40

DETAILED FEATURES

ROTATION (DIRECTION) MOTOR	Servo
FEEDING MOTOR	Servo
POWER NEEDED *110 V arrangement available	220 Volt 50hz/60hz
CURRENT PROTECTION	Available
RPM *OPTIONALLY CAN BE INCREASED	200
TORQUE	3800 n/m
TORQUE CONTROL	Available
BAR DRIVE	Single Line Chain
ROTATION GEARBOX	HKM Group Planet Gearbox 14:1
FEEDING GEARBOX	HKM Group Planet Gearbox 10:1
CONTROL SYSTEM	Manuel or Digital*(*Optional)
TOUCH SCREEN	Optional
EMERGENCY STOP	Available
SPARE CONTROL UNIT	Available
ROTATION LIMIT SYSTEM	Limit Switch
ROTATION(DIRECTION) SPEED ADJUSTMENT	Available
FEEDING SPEED ADJUSTMENT	Available (min. 0,01mm per revolution)
FEEDING DIRECTION	Forward & Backward /Reversible
ROTATION DIRECTION	Right & Left /Traverse
WORKING TEMPARATURES	Min. -30°C Max. +50°C
COOLING SYSTEM	Cooling Fan Engaged to Motor Shaft
LUBRICATION	Heat Proof Rubbered Grease
BODY MATERIAL	7075 Aluminum Alloy
GEARBOX MATERIAL	Carburized Steel
FIXTURE (ALIGNMENT) MATERIAL	4140 Treated Steel
WORKABILITY WITH PORTABLE POWER UNITS	Available
BORE WELDING * Optional Kit	MIG-Metal Gas Arc Welding (MGAW)
RAMP ON	Available
FACE MACHINNING	Optional
OUTBORE MACHINNING	Optional
DRILLING	Optional
GROOVING *With Optional Boring Bar	Up to M32 Optional
BLIND HOLE BORING	Available
CONIC BORING	Optional
LANGUAGE SELECTION	Optional
COLOR SELECTION	Optional
WARRANTY	Mechanical & Electrical 2 Years

MODEL KASOF 6025 Ø60



MAIN FEATURES

BORING BAR DIAMETER	Ø60 mm
BORING DIAMETER STD. (MIN-MAX) *OPTIONAL (MIN.-MAX.)	Ø61 mm - Ø350 mm Ø27 mm* - Ø1.200 mm* Optional
BORING BAR LENGTH (STD-OPT*.)	2.000 mm Std. Max. 6.000 mm*
BORING LENGTH/STROKE (* OPTIONAL)	500 mm – 2.000mm*
LENGTH OF MOVEMENT (*OPTIONAL)	6.000 mm*
MIN.-MAX. CUTTING DEPTH	0,01-10,00mm
FEED RATE	min. 0,01mm per revolution
CUTTING TOOL HOLDER	120° Ø20 mm
CUTTING TOOL UNTI-BREAKAGE	Available
MACHINNING SENSITIVITY	H7
SURFACE ROUGHNESS *based on cutter/working	Minimum ra&rz 3
WORKING POSITIONS	All positions/directions
MAXIMUM WORKING TIME	Unlimited
WEIGHT	37 Kg.

MODEL KASOF 6025 Ø60

STANDARD PACKAGE CONTENT

- ▶ 1X MAIN BODY (CHASSIS)



- ▶ 1X CONTROL UNIT



- ▶ 1X BORING BAR Ø60 2.000 MM



- ▶ 2X ALLIGNMENT MOUNT KIT



- ▶ 2X NECK FLANGE MOUNT FIXTURE



- ▶ 2X STRAIGHT MOUNT FIXTURE



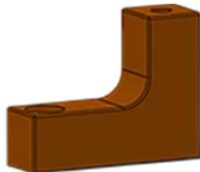
- ▶ 1X POWER CORD



- ▶ 1X CONNECTION CORD



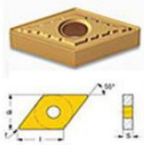
- ▶ 12X L FIXTURE LEGS



- ▶ 1X TOOL HOLDER Ø20MM



- ▶ 10X CUTTER/CUTTING TOOL





MODEL KASOF 6025 Ø60

DETAILED FEATURES

ROTATION (DIRECTION) MOTOR	Servo
FEEDING MOTOR	Servo
POWER NEEDED *110 V arrangement available	220 Volt 50hz/60hz
CURRENT PROTECTION	Available
RPM *OPTIONALLY CAN BE INCREASED	200
TORQUE	3800 n/m
TORQUE CONTROL	Available
BAR DRIVE	Double Line Chain
ROTATION GEARBOX	HKM Group Planet Gearbox 14:1
FEEDING GEARBOX	HKM Group Planet Gearbox 14:1
CONTROL SYSTEM	Manuel or Digital>(*Optional)
TOUCH SCREEN	Optional
EMERGENCY STOP	Available
SPARE CONTROL UNIT	Available
ROTATION LIMIT SYSTEM	Limit Switch
ROTATION(DIRECTION) SPEED ADJUSTMENT	Available
FEEDING SPEED ADJUSTMENT	Available (min. 0,01mm per revolution)
FEEDING DIRECTION	Forward & Backward /Reversible
ROTATION DIRECTION	Right & Left /Traverse
WORKING TEMPARATURES	Min. -30°C Max. +50°C
COOLING SYSTEM	Cooling Fan Engaged to Motor Shaft
LUBRICATION	Heat Proof Rubbered Grease
BODY MATERIAL	7075 Aluminum Alloy
GEARBOX MATERIAL	Carburized Steel
FIXTURE (ALIGNMENT) MATERIAL	4140 Treated Steel
WORKABILITY WITH PORTABLE POWER UNITS	Available
BORE WELDING * Optional Kit	MIG-Metal Gas Arc Welding (MGAW)
RAMP ON	Available
FACE MACHINNING	Optional
OUTBORE MACHINNING	Optional
DRILLING	Optional
GROOVING *With Optional Boring Bar	Up to M32 Optional
BLIND HOLE BORING	Available
CONIC BORING	Optional
LANGUAGE SELECTION	Optional
COLOR SELECTION	Optional
WARRANTY	Mechanical & Electrical 2 Years

REDUCER KIT FROM Ø60 TO Ø40

WHEN REQUIRED ON A Ø60 MODEL TO USE Ø40 BAR

- ▶ 1X BAR Ø40 2.000 MM



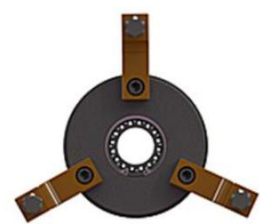
- ▶ 2X ALLIGNMENT Ø60 TO Ø40



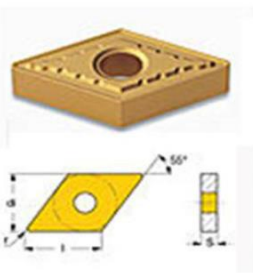
- ▶ 2X NECK FLANGE Ø60 TO Ø40



- ▶ 2X STRAIGHT MOUNT Ø60 TO Ø40



- ▶ 10X CUTTER



- ▶ 1X TOOL HOLDER Ø16MM



- ▶ 1X REDUCING ADAPTOR SET Ø60 TO Ø40



REDUCER KIT FROM Ø60 TO Ø25

WHEN REQUIRED ON A Ø60 MODEL TO USE Ø25 BAR

- ▶ 1X BAR Ø25 2.000 MM



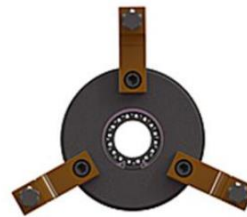
- ▶ 2X ALLIGNMENT Ø60 TO Ø25



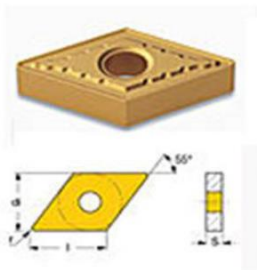
- ▶ 2X NECK FLANGE Ø60 TO Ø25



- ▶ 2X STRAIGHT MOUNT Ø60 TO Ø25



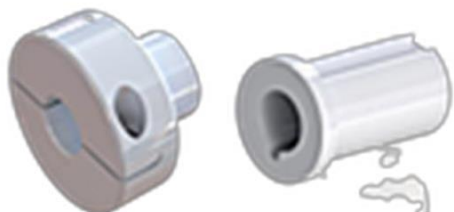
- ▶ 10X CUTTER



- ▶ 1X TOOL HOLDER Ø10MM



- ▶ 1X REDUCING ADAPTOR SET Ø60 TO Ø25



REDUCER KIT FROM Ø40 TO Ø25

WHEN REQUIRED ON A Ø40 MODEL TO USE Ø25 BAR

- ▶ 1X BAR Ø25 2.000 MM



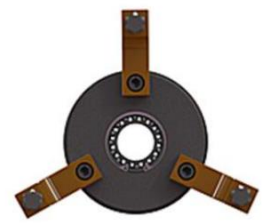
- ▶ 2X ALIGNMENT Ø40 TO Ø25



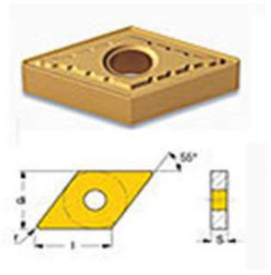
- ▶ 2X NECK FLANGE Ø40 TO Ø25



- ▶ 2X STRAIGHT MOUNT Ø40 TO Ø25



- ▶ 10X CUTTER



- ▶ 1X TOOL HOLDER Ø10MM



- ▶ 1X REDUCING ADAPTOR SET Ø40 TO Ø25



BORE WELDING KITS

FOR Ø60, Ø40 AND Ø25 BAR

- ▶ 1X WELDING TORCH; Ø60 OR Ø40 OR Ø25 DIAMETER 1.500MM ALUMINUM BAR



- ▶ 1X SWAN NECK



- ▶ 1X QUICK COUPLING



- ▶ 2X NOZZLE HOLDER SET

2 PCS M8XQ10X0,8
2 PCS M8XQ10X1,20
2 PCS M8XQ10X0,2



- ▶ 1X NOZZLE



FACE MACHINING KITS

FOR Ø60, Ø40 AND Ø25 BAR

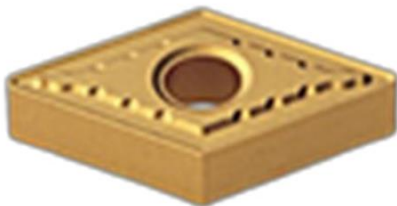
- ▶ 1X FACE BORING FIXTURE; Ø60 OR Ø40 OR Ø25



- ▶ 1X TOOL HOLDER; Ø10 FOR Ø25 BAR OR Ø16 FOR Ø40 BAR OR Ø20 FOR Ø60 BAR



- ▶ 10X (1 BOX) CUTTER/CUTTING TO





CONTACT INFORMATION

ADDRESS:
HKMGRUP MAKİNA SANAYİ
VE TİCARET LTD. ŞTİ.

Dudullu OSB, DES San. Sit.,
C-Blok, 114. Sk., No:22
34776 Ümraniye- İstanbul
TÜRKİYE

PHONE:
+90 216 415 00 71

WEB SITES:
www.hkmgrup.com.tr

EMAIL:
export@hkmgrup.com.tr

